

# INTEGRATED SECURITY SOLUTIONS



SERBIA

Securing Your World

# INNOVATE



Risk Consulting



Software & Technology



Systems Integration



Security Officers

**Innovation** inspired  
by 100 years of  
security experience  
and passion

G4S has a 100-year legacy of innovation in the security business. We never stop evolving our people, products, and services. We've created innovative technologies to help our security personnel execute their jobs more efficiently. We've developed new processes to identify and mitigate your security risks.

G4S has developed a unique approach to address today's security challenges. Our process is based around four components: **Assess. Design. Deliver. Optimize.** The goal is to work together to understand your risks and design a security program to meet your needs in a comprehensive way.

We **ASSESS** and evaluate your risks.

We **DESIGN** solutions to fit your needs.

We **DELIVER** capabilities that work together.

We **OPTIMIZE** your security program through meaningful data analytics.

ASSESS



GAS

# Collaborative risk **assessment** and evaluation

G4S helps you assess and evaluate risks, which allows you to make confident security decisions. Our advanced risk assessment process, identifies your organization's security needs and vulnerabilities. Our process enables you to confidently address risks with our industry-leading mix of technology and manpower.

## **Identify vulnerabilities**

Our teams work cross-functionally with your organization to identify risks in your strategy, finance, operations, and compliance policies using our proprietary risk assessment process. We help you understand threats to your business, what you are protecting, what you are protecting it from, and how to prevent, contain, or recover against a specific risk.

## **Deliver fact-based strategies**

We work with security leaders, senior management, and executives to evaluate each challenge, pinpoint objectives, and develop strategies that incorporate your business goals. We help you manage performance while achieving a balance between risk, opportunity, and return on investment.

## **Establish holistic risk management programs**

Our risk assessment process consists of a detailed review of resource identification, risk analysis, and resolution planning across the enterprise. The result is increased business resiliency and optimized profitability. We provide access to unparalleled industry knowledge, expert consulting, and integrated technologies backed by global resources.

# DESIGN



NOTE: HEIGHTS ARE TO TOP AND GRADE

START	INTERIM	CORNER	INTERIM	CORNER	INTERIM	INSULATOR
11'	12'	12'	12'	12'	12'	12'
ZC1-1	ZC1-2	ZC1-3	ZC1-4	ZC1-5	ZC1-6	ZC1-7

# Solutions designed by working with you

G4S collaborates with you to design a solution using the results of our risk assessment process. We offer a wide range of solutions to meet the specific needs of your business — from executive protection to software and technology, to systems integration and ongoing maintenance, to deploying the right people for the right roles.

## **Protecting customers' most valuable assets**

Some customers require protective services, crisis management, and emergency response. Our elite corporate risk services team is led and staffed with professionals who have government, military, or law enforcement backgrounds, as well as professionals with corporate security experience. We provide coverage to you 24-7-365.

## **State-of-the-art security technology**

- Our technology suite provides intelligent, policy-based, networked solutions to manage access, identity, visitors, and video for organizations of all sizes.
- Open platform enables integration with third-party products allowing you to grow seamlessly and meet industry compliance requirements.
- Our incident and case management solution, allows you to track and report on incidents and events in real time.

## **Successful collaboration leads to results**

Our systems integration team has experience in technology, products, and software, combined with strict attention to design detail. Our Video Monitoring and Operational Control Center, in tandem with systems maintenance and operational data analytics and diagnostics, provide you peace of mind. We back our engineering, technical, and management expertise with dependable maintenance support and training to create cutting-edge solutions.

## **We employ the best of the best**

The foundation of a security program's success is the quality and performance of the assigned personnel. Our security officers are chosen for their experience and disposition, and are carefully screened, recruited, and trained at our award-winning training center. Our data analysts, certified technicians, systems administrators, and systems engineers are selected for their knowledge and reputation in the industry.

# DELIVER





## **Delivery of an integrated solution**

After assessing your risks and designing a solution to fit your needs, G4S delivers your custom-built, industry-leading strategy. Although every customer has different needs and requirements, there are proven examples that our teams have delivered to help mitigate risk and improve efficiency.

### **Security officers and technology**

Security officers equipped with technology are more mobile, proactive, and responsive to incidents. With remote guarding and virtual/physical patrol response, your security force can do more and see more. We strengthen security programs with technology-enabled security officers connected to video monitoring services to reduce human error and produce cost savings. As technology applications, including drones and robots, continue to evolve and improve, we partner with innovative third-party developers to find new ways to extend our security presence and impact.

### **Intelligent Security Operations Center (ISOC)**

Delivering enhanced security services such as remote guarding, video, guard tours, alarm and access needs, and multi-site assessments as part of an ISOC are critical to many security programs today, but can be costly for you to build and maintain. Through years of experience, we have built a program where we can build, manage, and/or maintain your Operations Center. Whether it's setting up and building a center for dispatch and response, running a crisis management program with consulting capabilities, or providing an advanced analytics team to track and understand current data, we can help you optimize your resources to meet future demands.

### **Lobby and visitor experience**

Our security officers utilize the technology of our visitor management solutions to optimize a guest's check-in process. We work with you to understand compliance, audit, and concierge needs in your business. Our solution focuses on improving your visitors' experiences by streamlining the journey through the reception area, and reducing costs.

# OPTIMIZE



# Data and analytics that **optimize** your program

G4S leverages real-time intelligence, reporting and data analytics from your security program to help you continually monitor and improve your performance. We will continue to identify organizational risks, measure the potential financial impact, and enable you to proactively enact counter-measures to mitigate risk.

## **Enhance situational awareness**

We work with you to create a predictive workforce management model using internal and external intelligence feeds and data from core and non-core security platforms (including IT systems, HVAC, and building automation systems). With this data, we help you determine how to efficiently staff your buildings and provide the right level of security at the right times. Customers in different sectors use data in different ways. Retail customers can combine data with information from POS systems to build targeted marketing efforts yielding an enhanced shopping experience. Building managers can use the data to determine space utilization and identify areas of cost savings.

## **Decrease incidents with data analytics**

Collecting and continuously monitoring data on slips, trips, falls, and external crime statistics to include robberies, theft, and vandalism can help prevent future incidents and build a predictive analytics approach. This data, paired with the proper analytic algorithms, can help detect patterns the naked eye might not catch, show where incidents frequently occur, and where they are likely to occur in the future.

## **Proactive service management**

Many security systems and video networks are hard to manage and maintain. Today, customers need a way to improve ROI from security and video surveillance investments while reducing operational costs. G4S delivers proactive service management solutions for enterprises that automate the detection and resolution of potential system performance issues. Our advanced diagnostics systems enable you to reduce maintenance costs and improve ROI.

A long, brightly lit parking garage with three cars parked in the distance. The ceiling is filled with numerous rectangular light fixtures, creating a strong perspective effect. The walls are lined with parking stalls, some of which have numbers like '5', '3', and '1' visible. The floor is marked with white lines for parking spaces.

# SMART PARKING SOLUTION

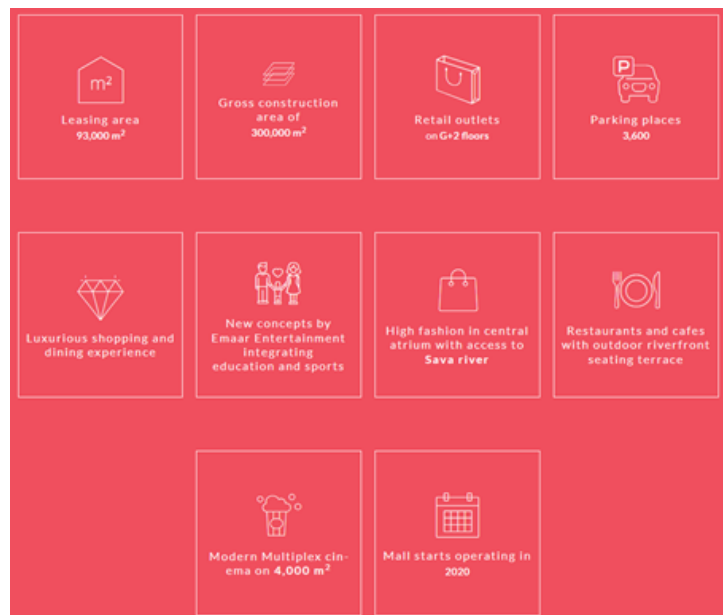
Belgrade Waterfront “Galleria mall”

- ▽ G4S started providing security services from the very beginning of the Belgrade Waterfront Project and today we have around 100 guards at the BW construction and completed sites.
- ▽ From manned security, security consultancy, security management, Cash-in-Transit to parking management services – our goal is to be a strategic partner to BW and to grow our business with them in a „smart city“ way
- ▽ The total construction area will spread over 1.8 million square meters and will become a home for 14.000+ people, creating 20.000+ jobs...



## BW GALLERIA MALL PROJECT

BW is finishing their Galleria shopping mall project and part of it the project is parking guidance & parking management system which has initially been designed to be based on traditional, ultrasonic sensor-based guidance. Being a truly Integrated Security provider and Electronic Security Systems integrator, G4S was advising the client to consider re-designing the parking system to more sophisticated solutions, i.e. video based.





# Customer Value (Investor)

## Security, Scalability, Profitability:

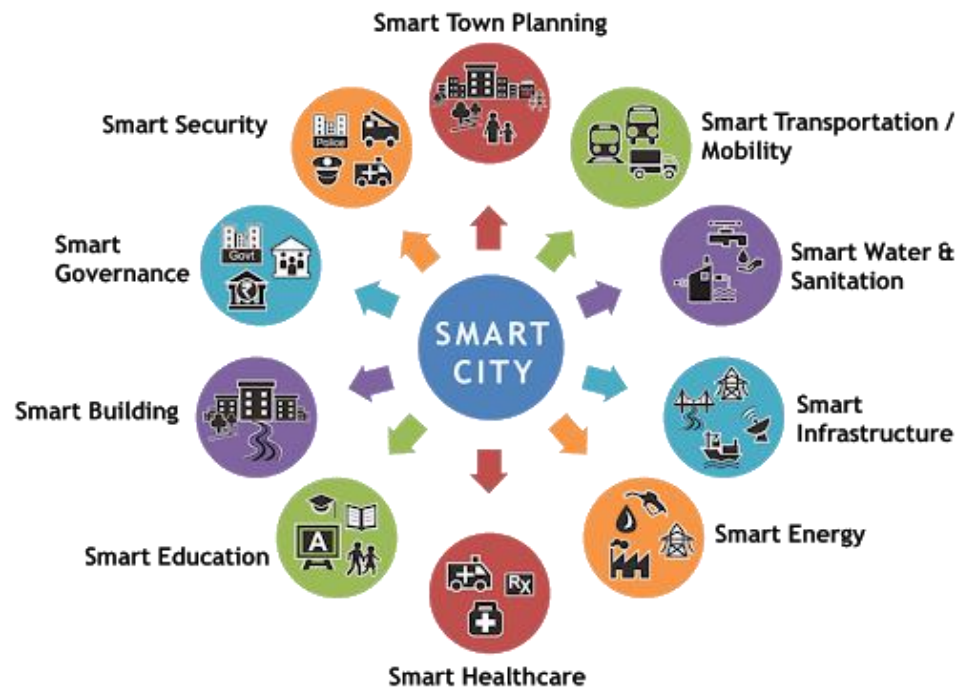
- Using unique vantage point to augment security
- The end of the lost-my-car syndrome
- Reward customer loyalty, while guarding against parking abuse
- Build loyalty and market share
- Better parking usage, planning and maintenance
- Increase efficiency and profitability
- A fully scalable data-driven solution
- Dynamic Pricing

# Project Scope

## Technology Integrated Solution:

- 3,600 parking spaces on 8 levels
- 1,500 cameras for Smart Parking Guidance and Monitoring (Dahua)
- 25 managed vehicle entry/exit points (SkiData)
  - License Plate Recognition
  - Automatic ticketing
  - Automatic barrier control
- 20 automated parking payment stations (SkiData)
- Centralised monitoring and operations (G4S)

# The future with G4S





# REFERENCES

HELP

TRUST

SUSTAIN

COOPERATE

PARTNER

SHARE

ASSIST

SUPPORT

COLLABORATE

ADVICE





## Banking

### Installation and maintenance of Electronic Security Systems in banks:

- We provide services in more than 200 branches in Serbia
- We install and maintain:
  - Intruder alarm systems
  - Video surveillance
  - Fire detection systems
  - Access control systems and time attendance
  - Public address systems
- Centralized remote monitoring of facilities 24 hours, 365 days per year
- We assess the security, constant monitoring and control, particularly in fire protection, in accordance with legal regulations and requirements (G4S has necessary certificates and approvals).



NATIONAL BANK  
OF GREECE



# Property Development

## Electronic Security Systems at the Maxima Center Belgrade

- Installation of Bosch's addressable Integrated Electronic Security Systems with two FPA-5000 in both building block GP-5 and GP-6 (Maxima Center), with over 22.000m<sup>2</sup>.
- Installation of fire detection system: BOSCH FPA-5000
- Installed software for remote monitoring and control: BOSCH FSM-2000
- 6 or 10 addressable detector loops per control panel
- Parallel console for remote control: Bosch FMR 5000-13
- Number of addressable elements: over 1000



## Electronic Security Systems at Ada Mall



- Fire detection system
- Gas Detection Systems (CO and Natural Gas)
- Public Address and Voice Evacuation System
- Video Surveillance System
- Intrusion Alarm System
- Access Control System



## Industrial

### Electronic Security Systems for Cooper Tires factory in Kruševac

- Fire detection system
- Fire suppression system - sprinkler
- Access control system
- Time & Attendance system



### Integrated Electronic Security Systems for BOSCH factory in Pećinci

- BIS
- Video surveillance system
- System of fire detection and gas
- Access control system
- Intrusion detection system



### Electronic Security Systems for Serbian glass factory in Paraćin

- Video surveillance system
- A system for detecting license plates
- Access control system
- System turnstile and ramp

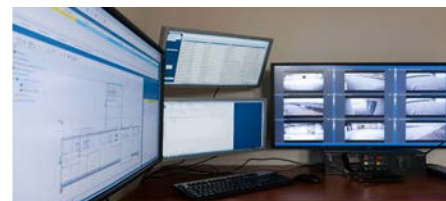




## Industrial

### Integrated Electronic Security Systems for GRUNDFOS factory in Indija

- BIS
- Video surveillance system
- Systems of fire and gas detection
- Access control system
- Intrusion detection system



### Electronic Security Systems for Henkel Serbia

- Fire detection system
- Gas Detection Systems (Natural Gas and Hydrogen)
- Video Surveillance System





## Infrastructure

### Road tunnels in Belgrade traffic road ring Electronic Security Systems in tunnels **Železnik** and **Lipak**:

- Installed addressable fire systems in tunnels: detection of fire in the tunnel with a term sensitive cable with resolution + / - 1m, and fire detection SOS niches through addressable MULTI detector and manual call points.
- Integration of Fire protection systems with SCADA system and the inclusion of ventilation in tunnels.
- Installed IP surveillance systems
- Installed intrusion detection system
- Installed IP intercom communication between emergency niche - Power plants.
- Installed PA system in the tunnel.
- Installed radio links in the tunnel.



### Electronic Security Systems and visual notification for the Railway station **Prokop** in Belgrade

- Video surveillance system
- The public address system
- Access control system
- System of fire detection
- The video display system
- The clock system





## Infrastructure

### Electronic Security Systems for Tunnel Šarani and Brančiči - State Highway

- Video surveillance system
- The public address system
- SOS intercom system



### Integrated Electronic Security Systems Univerexport distribution center

- Video surveillance system
- The public address system
- SOS intercom system
- BIS - software integration
- Video surveillance system
- Systems of fire and gas detection
- Access control system
- Intrusion detection system



## Other references:

Embassy of Republic Serbia in Brussels -Integrated Electronic Security Systems  
Russian Embassy – Integrated Electronic Security Systems  
American Embassy – Integrated Electronic Security Systems  
Turkish Embassy – Integrated Electronic Security Systems  
Israel Embassy – manned security by call and Integrated Electronic Security Systems  
Australian Embassy-Integrated Electronic Security Systems  
Spanish Embassy – alarm monitoring  
Embassy of Denmark - security systems & alarm monitoring  
Embassy of Sweden - security systems & alarm monitoring  
Commercial Court of Republic of Serbia - Integrated Electronic Security Systems  
The European Agency for Reconstruction - Integrated Electronic Security Systems  
Microsoft - alarm monitoring and security systems maintenance  
Endava - alarm monitoring and Integrated Electronic Security Systems  
Faculty of Architecture - Integrated Electronic Security Systems  
Hyatt Regency Hotel - Integrated Electronic Security Systems  
Carlsberg Serbia - Integrated Electronic Security Systems  
Philip Morris Intl- alarm systems and alarm monitoring  
British International School - manned security, alarm monitoring and fire services  
Renault Nissan Serbia doo - manned security and Integrated Electronic Security Systems  
Porsche SCG doo - Integrated Electronic Security Systems  
Dr. Oetker - Integrated Electronic Security Systems  
Ericsson Telecommunications - Integrated Electronic Security Systems  
DM Drogerie markt - alarm monitoring and Integrated Electronic Security Systems  
Lilly Drogerie - alarm monitoring and Integrated Electronic Security Systems  
GTC - Integrated Electronic Security Systems  
Executive Council of Vojvodina  
Belgrade Medical Center  
Government Complex and stadium, Uyo, Akwa Ibom State Nigeria (implemented in partnership with the Energoprojekt equipment)  
Post of Serbia

and much more...





Risk Consulting



Software & Technology



Systems Integration



Security Officers



[g4s.rs](http://g4s.rs)