

G4S CANINE SECURITY SERVICES ELCAS & AIM QUALIFICATIONS



ELCAS 4938



G4S CANINE SPECIALIST COURSES

Overview

With over 657,000 employees in more than 125 Countries, G4S is the world's leading international security solutions group.

G4S specialist Canine Training provides a gateway into the security industry.

On completion of your AIM course delegates will have the qualifications and certification to become employed within the global security industry, either with G4S or another global security business.

Approved Centre

- NASDU Approved Training Centre
- NOMS Approved Training Centre (Prisons)
- ELCAS Approved Training Centre 4938 (Military)
- AIM Qualification Approved Training Centre Home office licence for Explosives
- Home office licensed for Narcotics

Training Team

Our Training Team is made up of former RAVC and Civilian Personnel, who bring a mix of operational expertise and professional qualifications to the design and delivery of our course.

Facilities

Our comprehensive training package are delivered at our Canine Training school based just of junction 10 of M1 in the Bedfordshire countryside.

Accommodation

Accommodation is not provided but there are plenty of Hotels B&B Campsites very close to the training school.

Course Dogs

Course dogs can be supplied for duration of course free of charge. This enables us to focus on your progression as a handler, and allows you to gain as much perspective as possible before you make further investment towards your dog handling career.

If you would like to use your own dog on course he/she will need to be assessed prior to the commencement of the course.



G4S Canine Level Three Explosive Detection Dog Handling

Through our in house NASDU Approved Instructors G4S Canine are proud to deliver the following AIM learning programs as accredited by Highfield qualifications.

Course Discipline	Course Length	Course Price
Level Three Explosive Detection Dog Handling	26 Days	£3,300

All prices include VAT, registration and administration fees. We usually ask for a 50% non-refundable deposit to secure your place on the course, and the remaining balance to be paid prior to course commencement. If you are using ELCAS credits towards your course, we can accept the CAN document in lieu of a deposit.

It is worth noting that there are often employment opportunities within G4S Canine, we have several ex-students who have decided to go through screening now working full time for us. It is not essential to have an SIA licence prior to the course, but you will need one before you can deploy - this is a legal requirement to work in the security industry.



Meet the Team, from left to right, Andy Davies - Senior Instructor, Lee Deighton - Canine Manager and James Davies - Instructor

G4S CANINE LEVEL THREE EXPLOSIVE DETECTION DOG HANDLING

Introduction

The AIM Level 3 Certificate for Explosive Detection Dog Handlers aims to provide the learner with the basic skills, knowledge and understanding required to ensure the provision of a professional level of service as an Explosive Detection Dog Team.

This qualification has been developed by AIM to meet the National Occupational Standards (NOS's) for a Security Detection Dog Handler and the training requirements contained within BS 8517:2 2016, (in that) it is an assessment of the learners (handlers) ability to read the indications given by a dog and to meet the required performance criteria.

Suitability

This programme ideally meets the requirements of those learners who have experience as General Purpose Security Dog Handlers or Security Officers and wish to become Explosive Detection Dog Handlers. It would also be suitable for members of HM Armed Forces, Police, Prison Service or Customs Officers who wish to take on an Explosive Detection Dog Handler role in the private security industry.

We are able to accept suitable individuals without prior experience, but do recommend completing a GP Level 2 course in addition to EDD if full time work is required. Learners must be physically fit (capable of holding and handling the working dogs) and be able to pass basic L2 English. Due to health considerations this programme is not suitable for women who at the time of training are pregnant.

Course Duration

Training would be delivered over a number of weeks and would be of sufficient duration to ensure competency, having a minimum number of guided learning hours (GLH's). GLH's are recorded hours of direct training, structured learning and assessment given to an individual learner by their tutor and not the duration of the course.

Program Structure

The programme is flexible with a mixture of theory and practical tuition and is made up of five units all of which are compulsory (see content).

Assessment

Course assessment shall be of the team and carried out by an Approved AIM Instructor/Trainer; internal moderation shall be carried out by AIM. External moderation shall be carried out by OFQUAL. The mode of assessment shall be by on-going practical assessment, by question and answer sessions, by a written examination and final practical examination. Final assessment/examination regarding the indication of target scents and safe systematic search shall be carried out by a suitably qualified examiner (i.e. ACPO) that does not have an interest in the learner passing the qualification.

Course Content

Unit 01

Roles and Responsibilities of an Explosive Detection Dog Handler:
Underpinning Knowledge

Unit 02

Control an Explosive Detection Dog under Operational Conditions:
Selection Control Recall

Unit 03

Operational Control:

- Prior Assessment Locating
- Building Search Locating
- Vehicle Search Locating
- Open Terrain Search Indication
- Building Search Indication
- Vehicle Search Indication
- Open Search Safe Systematic Search

Unit 04

Health & Safety:

- Health & Safety Assessment
- Grooming
- Load & Unload
- Emergency First Aid

Unit 05

Management:

- Operational Management Storage
- Use & Transportation
- Progression of Training

G4S CANINE ON SITE FACILITIES

CLASSROOM



ON SITE TRAINING AREAS



G4S CANINE ON SITE FACILITIES

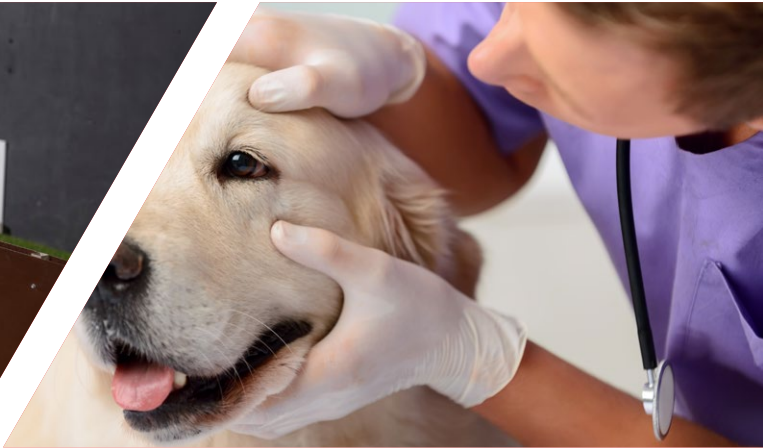
SCENT IDENTIFICATION



FOCUS ROOM



ON-SITE VETS



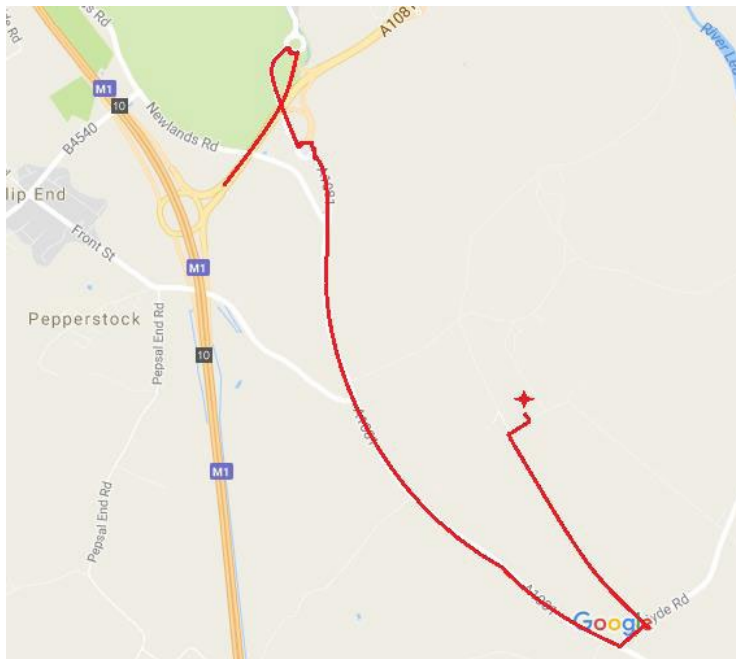
WHERE TO FIND US

Location

Our courses are based from our training centre:
Unit 6-7 Home Farm, Luton Hoo Estate, Luton, LU1 3TD.

How to find us

Leave the M1 at Junction 10. Keep left to take the slip road towards Luton. At the roundabout take the first exit for the underpass. At the second roundabout take the second exit towards Harpenden. Take the second road on the left West Hyde Road, and then turn left through the black gates and continue up the avenue lined with trees. Our offices are situated in the top right hand corner of the office block at the end of the drive. You will need to turn right and then left to enter the block as there is a one way system in place.



Accommodation

Listed below are some of the places students have stayed previously.
We recommend that you search accommodation near LU1 4LF or LU1 3TQ.

Beechwood Farm B&B

Beechwood Park, Markyate, St Albans, Hertfordshire, AL3 8AJ
Julie@beechwoodhomefarm.co.uk

Hyde Mill

Lower Luton Road, East Hyde, Luton, Bedfordshire LU2 9PX (01582 712641)

Holiday Inn Luton South M1

JCT.9 London Road, Markyate, Luton, AL3 8HH

Hampton by Hilton London Luton Airport

42-50 Kimpton Road, Luton, LU2 0NB

Ramada Encore London Luton Airport

Airport Way, Luton, LU2 9LF

Holiday Inn Express London Luton Airport

2 Percival Way, Luton, LU2 9GP

Stockwood Hotel

41/43 Stockwood Crescent, Luton, LU1 3SS

Premiere inn Hotels

Osborne Rd, Luton, Bedford LU1 3HJ

Regent St, Luton, Bedford LU1 5FA

London Rd, Markyate, St Albans, Hertfordshire AL3 8HT

(Osborne Road or around the airport are very close and London Road hotels are only minutes away)

Contact Us

Lee Deighton
Canine Manager

E: lee.deighton@uk.g4s.com,

T: 01582 458 355

Unit 6 - 7 home farm,
Luton Hoo Estate,
Luton,
LU1 3TD



ELCAS 4938

