



# Connected Lock

REAL TIME SECURITY FOR GOODS IN TRANSIT



An ALLIED UNIVERSAL Company



# The Challenge

The role of security in the supply chain goes far beyond the point of manufacture or warehouse and only ends when the goods have arrived in their final destination.

A TAPA EMEA Cargo Theft Report published in October 2022, estimates cargo crime costs the industry an estimated £84 million annually. So securing goods in transit is essential within supply chain security.

But the role of security goes far beyond securing the goods themselves.

Organisations have a duty of care to safeguard their drivers, promote good road safety practice and avoid the significant costs that can occur in the event of avoidable delays whilst goods are in transit - all whilst operating in the most sustainable manner.

“  
According to TAPA EMEA, cargo crime costs the industry an estimated £84 million annually.  
”



# Index

**P4 INTRODUCTION**

**P5 COMPONENTS**

**P6 DEVICE**

**P8 MONITORING PLATFORM**

**P10 SECURITY OPERATIONS CENTRE**

**P11 MOBILE RESPONSE**

**P12 FROM START TO END OF JOURNEY**

**P13 OUR CREDENTIALS**

# Introducing the Connected Lock

INTRODUCTION > DEVICE > MONITORING PLATFORM > SECURITY OPERATIONS CENTRE > MOBILE RESPONSE > THE COMPLETE JOURNEY

## THE CONNECTED LOCK FROM G4S PROVIDES A SERIES OF BENEFITS INCLUDING:

### Greater Visibility

Receive a detailed, real time overview of the current location & status of your vehicle fleet and quick view of today's trip and unlocks.



### Be More Sustainable

Receive a dynamic estimate of emissions per trip and take corrective action. Reduce the environmental impact of using thousands of single use seals.

### Control Costs

Receive a dynamic estimate of the costs of each trip to manage your spend in real time.



### Monitor Contractor Performance

Monitor the status of your cargo and SLA performance even if the transport is handled by subcontractors.

### Meet Your Duty of Care

Support your drivers by providing real time support.



### Replace manual processes

Eliminate the manual & error intensive process of sealing and unsealing the cargo using single use seals (plastic or metal).

### Make Better Decisions

With simplified access to data. Create a variety of reports and schedule their delivery via email to specific users at set periodic intervals.



### Prevent Unauthorised Access

Manage authorisation & details of all people able to unlock the devices.



# What makes up the Connected Lock?

**INTRODUCTION > DEVICE > MONITORING PLATFORM > SECURITY OPERATIONS CENTRE > MOBILE RESPONSE > THE COMPLETE JOURNEY**

## DEVICE

The Connected Lock is a GPS & 4G enabled and IP67 rated device. The device is secured to the lorry via a heavy duty magnet at the back of the device which allows it to be securely attached to the trailer door.



## MONITORING PLATFORM

Using the feed provided by the connected lock, our monitoring platform provides a real-time overview of the current location & status of your trailers and a quick view of today's trip and unlocks. This real time monitoring allows you to make real time decisions to boost productivity.



## SECURITY OPERATIONS CENTRE

Should you deem it appropriate, we can overlay the connected lock service with a G4S provided security SOC. For international transportation, this can be a centralised service which coordinates response with our international network of in country operations centres.



## MOBILE ASSISTANCE

Where incidents occur and physical assistance is required, our operations centre will coordinate a response, using our network of physical mobile response team who provide a professional security service to assist your driver and secure your cargo, working in collaboration with emergency services.



# The Connected Lock Device

DURABLE AND **SECURE** CARGO MANAGEMENT

INTRODUCTION > **DEVICE** > MONITORING PLATFORM > SECURITY OPERATIONS CENTRE > MOBILE RESPONSE > THE COMPLETE JOURNEY

## THE DEVICE



The Connected Lock is a GPS & 4G enabled and IP67-rated Mobile Access Control device. The device is secured to the lorry via a heavy-duty magnet at the back of the device which allows it to be securely attached to the trailer door.



Supplied with a long lasting 15,000 mAh rechargeable battery, the lock is supplied ready for up to 45 days of intensive use. The lock is supplied inclusive of GPS to allow location monitoring and accelerometer to monitor movement. Users have the option to track fleet in close to real time or via periodic updates when the vehicle becomes stationary.



The locks are supplied with registered RFID cards (up to 500 cards per unit) or can be opened via remote command. The system provides clear authorisation levels for those authorised to provide access to the trailer and transfers data providing sight of each event - which user completed the unlock, when, where and the duration of the unlock



The system will further alert if a cable is cut or back cover removed.

REMOVABLE  
CABLE

RFID READER



# The Connected Lock Device

DURABLE AND **SECURE** CARGO MANAGEMENT

INTRODUCTION > **DEVICE** > MONITORING PLATFORM > SECURITY OPERATIONS CENTRE > MOBILE RESPONSE > THE COMPLETE JOURNEY

## Controlled Access

THE CONNECTED LOCK PROVIDES A NUMBER OF CONTROLLED ACCESS METHODS TO YOUR CARGO

### UNLOCKING METHOD:

#### RFID CARDS



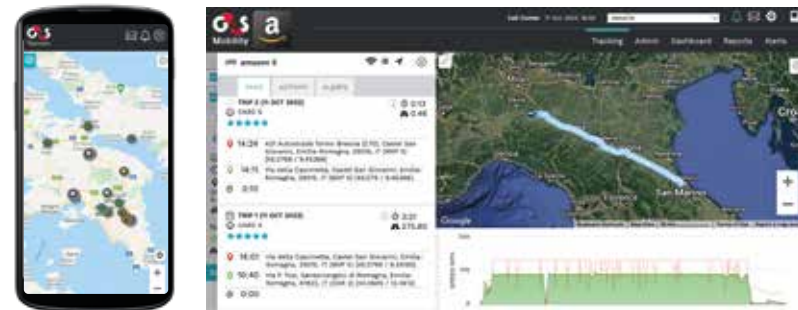
##### a. Origin & Destination area RFID card holders

All origin and destination sites are mapped and provided with named RFID cards to specific field operators that will perform the unlock.

##### b. Drivers using their allocated RFID cards

Driver is always authorized to open the cargo compartment with his allocated RFID Card in any secure area without triggering an alert. If the RFID card is used in an unrecognized area that would constitute an alert

#### PLATFORM/APP REMOTE COMMAND



##### a. Via mobile app by field operators

Field operators use their app credentials to login to the G4S Mobility platform and send the unlock command via their mobile

##### b. Via platform by 24/7 Secure Operations Center

The 24/7 Operations Center remotely unlocks the device when a vehicle is ready to collect or deliver.

# The Monitoring Platform

REAL TIME DATA VISIBILITY **POWERING** BETTER DECISION MAKING

INTRODUCTION > DEVICE > **MONITORING PLATFORM** > SECURITY OPERATIONS CENTRE > MOBILE RESPONSE > THE COMPLETE JOURNEY

Using the feed provided by the connected lock, our monitoring platform provides a real-time overview of the current location & status of your trailers and a quick view of today's trip and unlocks.

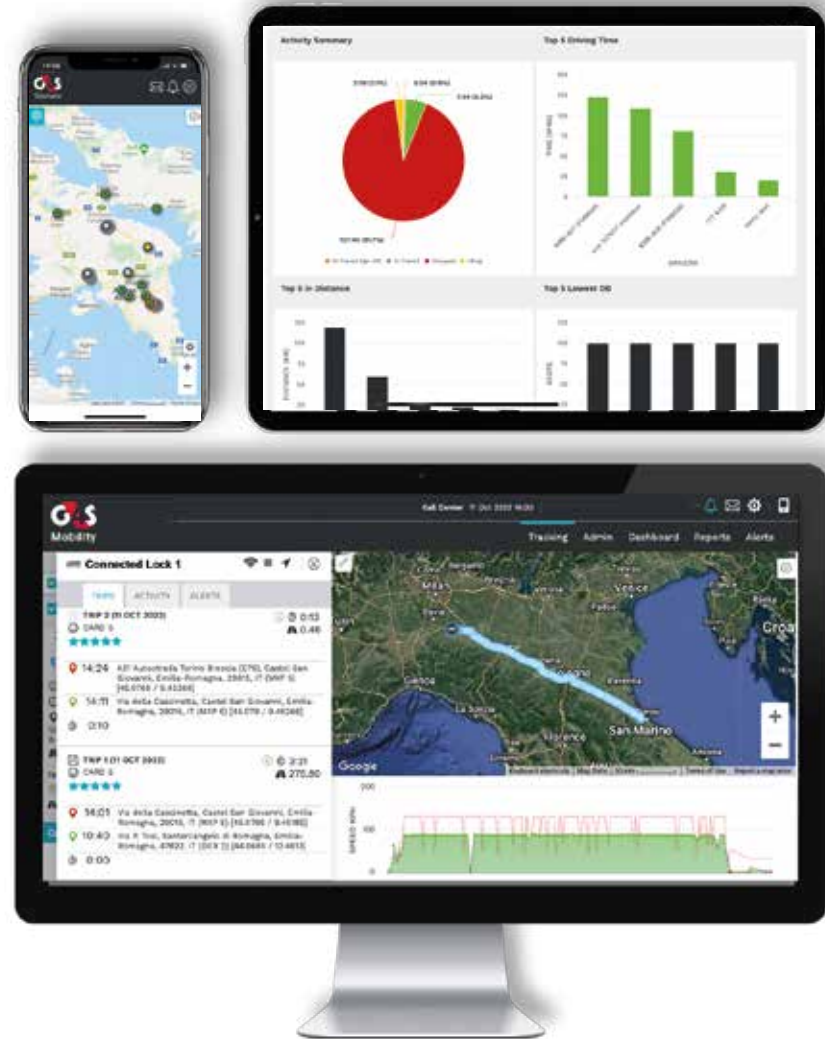
Continually capturing data, a live dashboard with parameterisable views will monitor fleet performance and the platform will show you a dynamic estimation of transport costs & emissions per trip to support your expenditure management and environmental responsibilities.

Risks can be managed by sharing no-go-zones to prevent unnecessary delays in transit and avoid high risk areas.

A system administrator manage authorisation & details of all people able to unlock the devices to make sure the necessary controls are in place.

Provide better information by using the reporting tool which allows you to create a variety of reports and schedule their delivery via email to specific users at set periodic intervals.

Configure the platform to alert to unusual or suspicious activities and escalate high priority events to our G4S Secure Operations Center for 24/7 handling and response





# The Monitoring Platform

REAL TIME DATA VISIBILITY **POWERING** BETTER DECISION MAKING

INTRODUCTION > DEVICE > **MONITORING PLATFORM** > SECURITY OPERATIONS CENTRE > MOBILE RESPONSE > THE COMPLETE JOURNEY

## Route Announcement/Termination

OPERATE IN COMPLIANCE AND SIMPLIFY YOUR PROCESSES

Digitise and simplify processes and support your drivers by using a simple web based data capture process.

Your staff can simply declare a route announcement/termination and attach photos of the cargo, lock placement and trailer for audit purposes. Dynamic fields allow staff to capture if they are registering an announcement or termination

For high profile and valuable cargo, upon real-time submission, real-time monitoring services are activated.

This form capture provides an additional layer of security by allowing you to create a digital log of all the shipments and respective devices that were used and also records the person who unlocked



# Security Operations Centre

INTRODUCTION > DEVICE > MONITORING PLATFORM > **SECURITY OPERATIONS CENTRE** > MOBILE RESPONSE > THE COMPLETE JOURNEY

**Should you deem it appropriate, we can overlay the connected lock service with a G4S provided security SOC.**

Our operations centre is staffed 24/7 by trained and certified operators who operate to the highest quality standards.

Staff monitor the execution of a route in real-time and immediately respond to any deviation from the agreed SOP at any time of the day or night.

An Alert management platform receives and displays each alert to the operator and contains all the verification and escalation flows agreed with you so that you are supplied with the detail that you require when you need it.

When incidents occur critical KPIs are monitored such as the speed of our response and resolution.

Where goods are being transported cross border, G4S Telematics Control Tower monitors routes and in the case of an incident, orchestrates the response through a world-wide network of our own & partner SOC and local authorities.



# Mobile Response

INTRODUCTION > DEVICE > MONITORING PLATFORM > SECURITY OPERATIONS CENTRE > **MOBILE RESPONSE** > THE COMPLETE JOURNEY

Where incidents occur and physical assistance is required, our operations centre will coordinate a response.

Where appropriate, our mobile security teams attend and secure the scene and support your staff whilst engaging with emergency services.

Depending on the territory, our teams operate nationwide and operate to pre agreed SLA's to provide confidence that you'll always have a security presence on hand when you need it.



# From the Start to the End of the Journey

INTRODUCTION > DEVICE > MONITORING PLATFORM > SECURITY OPERATIONS CENTRE > MOBILE RESPONSE > **THE COMPLETE JOURNEY**

**THE CONNECTED LOCK PROVIDES ASSISTANCE FROM THE START TO THE END OF THE JOURNEY.**

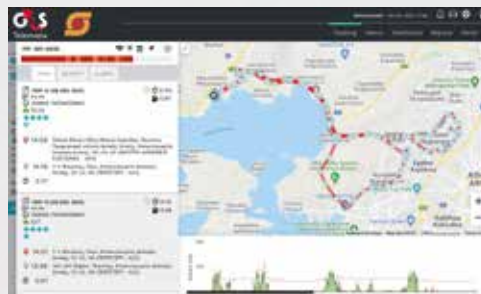


## SEALING

Web forms & the connected lock replace loading manifest report and plastic seals respectively

Scan device QR code from a smartphone to open the form

Upload photos of the cargo & vehicle at Origin/Destination



## TRANSPORT PHASE

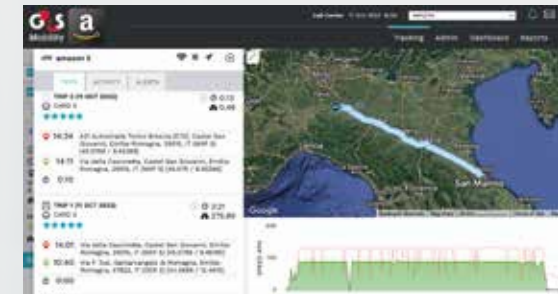
Live monitoring and recording of routes

Detailed supervision and recording of unlocks

Notifications when cargo enters or exits Points Of Interest (POI - e.x warehouse or delivery point)

Reporting of service time per POI

Notifications in case of exceptions



## INCIDENT

Immediate notification  
(Cable Cut/Tamper/Unlock out of POI)

Easy traceability of time and location of incident

24/7 Incident Receiving and Handling by our SOC

# Our Credentials

INTRODUCTION > DEVICE > MONITORING PLATFORM > SECURITY OPERATIONS CENTRE > MOBILE RESPONSE > THE COMPLETE JOURNEY

G4S & Allied Universal is the leading provider of security services in the world, with a presence in over 90 countries and 800,000 employees. Our mission is to provide security services and cutting-edge technology to deliver customized and ever-evolving solutions that allow our customers to have peace of mind and optimize and focus on their core business.

We are trusted by some of the world's largest organisations to secure their supply chain - from point of manufacture, to warehouse and whilst the goods are in transit.

Under the telematics domain, G4S Telematix is the G4S Academy Center of Excellence (CoE) and for over 20 years we have been building solutions for the remote monitoring, management and protection of moving assets. Starting by developing a Fleet Management

solution for the thousands of armoured cash-in-transit vehicles of the group, our telematics activity now spans 3 sectors, those of Logistics, Automotive and People Safety.

Combining the most advanced telematics equipment, the G4S Mobility platform and the 24/7 Security Operations Center we offer constantly evolving services for the optimal management and protection of people and assets on the move.

90 countries

800,000 employees

Building solutions for 20 years

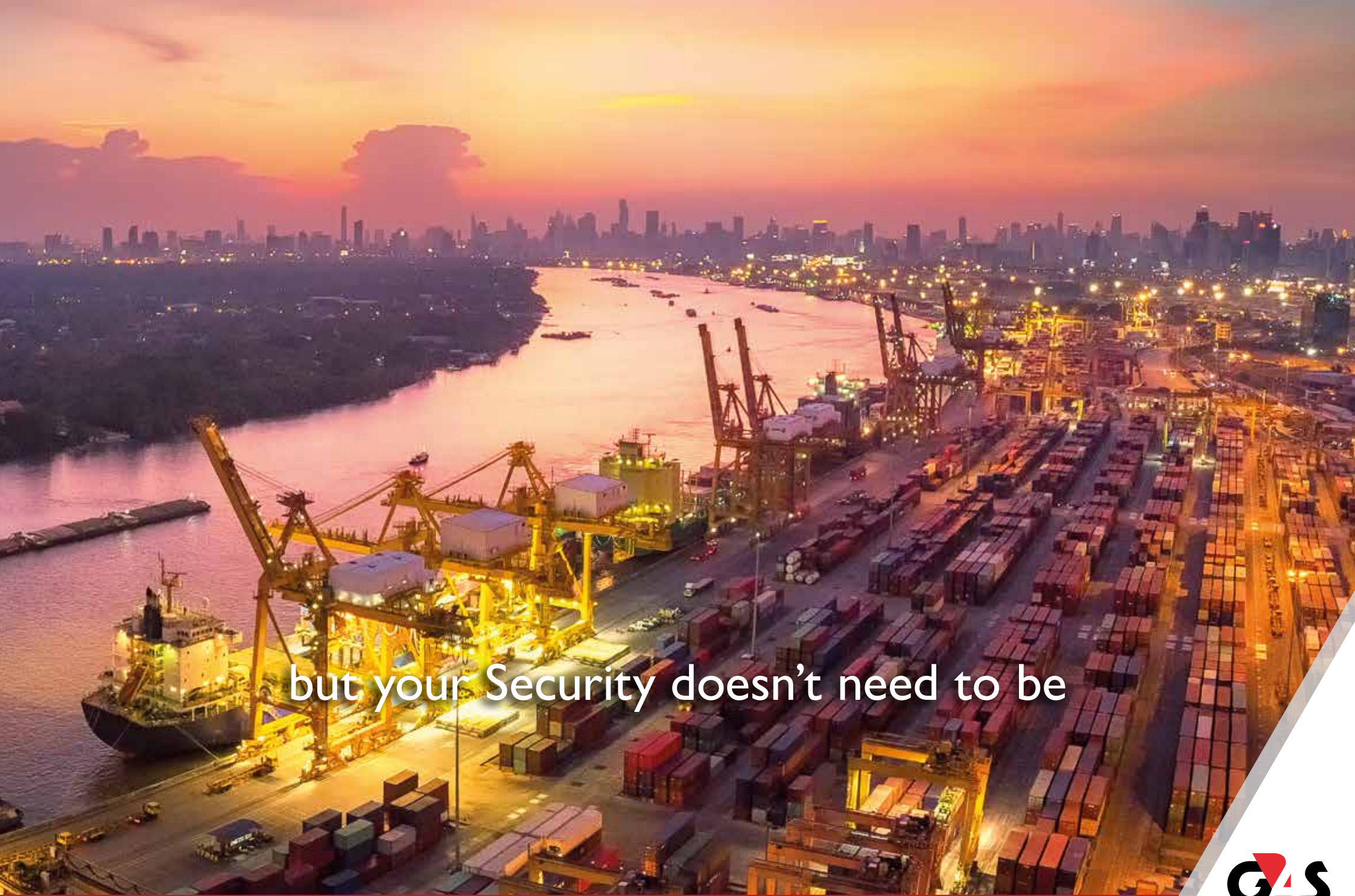
Spanning 3 sectors

24/7

# G4S Supply Chain Security

An aerial photograph of a city at dusk. The sky is a mix of dark blue and orange. In the foreground, a wide river flows, with a large industrial port structure on the right side, illuminated with yellow lights. A small boat is visible in the middle of the river. The city lights are visible in the background, creating a glowing horizon.

your supply chain may be complicated...



but your Security doesn't need to be



## **G4S SUPPLY CHAIN SECURITY**

Contact us

### **G4S Telematix**

7 Sorou 14452, Metamorfofi Greece

Phone: +30-2102896300

Website:

<https://en.g4stelematix.com/secure-supply-chain>

